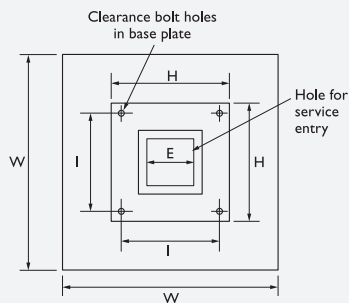
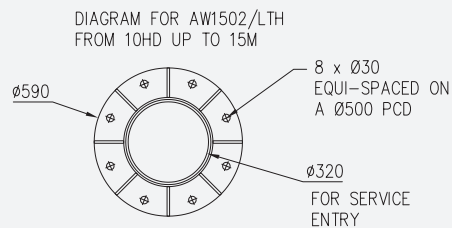
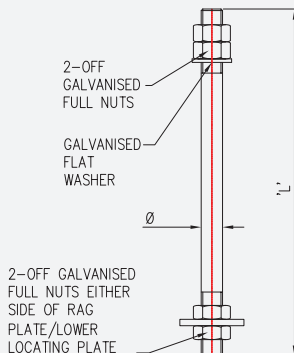


Lowering Trolley Head Poles ← Foundations & Installation Methods

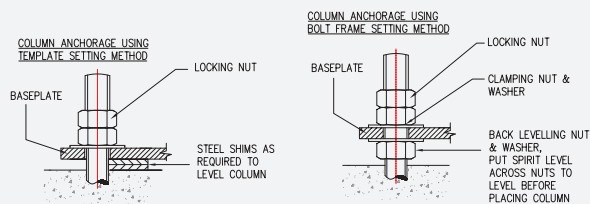
MODEL NO.	HEIGHT MTRS	BOLT CENTRES I	BASE PLATE SIZE H	BURIED DEPTH D
AW1545LTH				
AW1545/4 - AW1545/8	4-8	550	630	200
AW1545/8/HD - AW1545/10	8-10	550	630	200
AW1545/10/HD - AW1545/15	10-15	700	800	200
AW1502/LTH				
AW1502/5/LTH - /7/LTH	5-7	450	510	200
AW1502/8/LTH - /9/LTH	8-9	550	630	200
AW1502/10/LTH - /15/LTH	As per diagram on right			



FOR HOLDING DOWN BOLT SIZE REFER TO PRODUCT TECHNICAL SPECIFICATION PAGE



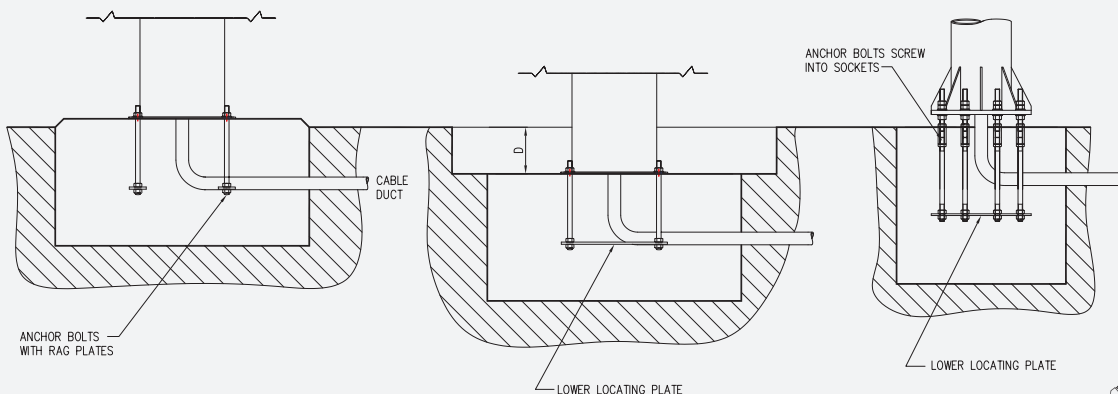
BOLT PROJECTION P	
BOLT SIZE	P in mm
M16	50
M20	60
M24	80
M27	100



SURFACE MOUNTED SHOWING TEMPLATE METHOD

BELOW SURFACE MOUNTED SHOWING BOLT FRAME METHOD

BOLT FRAME IN ACCORDANCE WITH BD94/07



FOUNDATIONS SIZES FOR THE UK

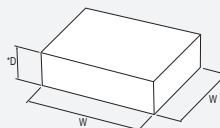
POLE HEIGHT M	COUNTRY LOCATION			TOWN LOCATION		
	AREA A	AREA B	AREA C	AREA A	AREA B	AREA C
4	0.9x0.9x0.45	0.9x0.9x0.5	1x1x0.5	0.8x0.8x0.4	0.9x0.9x0.45	0.9x0.9x0.5
5	1x1x0.5	1x1x0.5	1x1x0.75	0.9x0.9x0.5	1x1x0.5	1x1x0.5
6	1x1x0.75	1x1x0.75	1.1x1.1x0.75	1x1x0.5	1x1x0.75	1.1x1.1x0.75
7	1x1x0.75	1.1x1.1x0.75	1.25x1.25x0.75	1x1x0.75	1.1x1.1x0.75	1.1x1.1x0.75
8	1.1x1.1x0.75	1.25x1.25x0.75	1.4x1.4x0.75	1.1x1.1x0.75	1.25x1.25x0.75	1.4x1.4x0.75
9	1.25x1.25x0.75	1.4x1.4x0.75	1.5x1.5x0.75	1.1x1.1x0.75	1.25x1.25x0.75	1.4x1.4x0.75
10	1.4x1.4x0.75	1.5x1.5x0.75	1.6x1.6x0.8	1.25x1.25x0.75	1.4x1.4x0.75	1.5x1.5x0.75
11	1.4x1.4x0.75	1.5x1.5x0.75	1.6x1.6x0.8	1.25x1.25x0.75	1.4x1.4x0.75	1.5x1.5x0.75
12	1.5x1.5x0.75	1.6x1.6x0.8	1.7x1.7x0.9	1.4x1.4x0.75	1.5x1.5x0.75	1.6x1.6x0.8
13	1.6x1.6x0.8	1.7x1.7x0.9	1.8x1.8x1	1.5x1.5x0.75	1.6x1.6x0.8	1.8x1.8x0.9
14	1.7x1.7x0.9	1.8x1.8x1	2x2x1	1.6x1.6x0.8	1.7x1.7x0.9	1.8x1.8x1
15	1.8x1.8x0.9	2x2x1	2.1x2.1x1.1	1.7x1.7x0.9	1.8x1.8x0.9	2x2x1

Foundations sizes are W x W x D

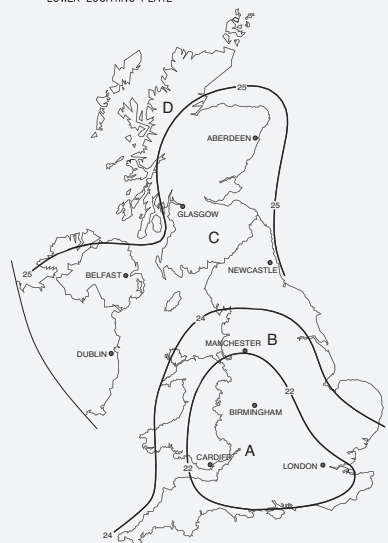
FOR FOUNDATION SIZES:- A MINIMUM SOIL BEARING PRESSURE OF 75kN/m² IS ASSUMED

Minimum concrete Grade C35
Allow 72 hours after pouring concrete before installing pole or tower

Please note that foundation sizes shown in the table above are in accordance with recommended headload and windload capacities shown in technical specification tables. For increased headloads - foundations may need to increase in size - please contact us for revised foundation sizes for specific installations.



*D= 1000 on PM and buried flange/embedded base models



- WIND SPEED AREAS 22m/s, 24m/s, 25m/s TAKEN FROM FIG 6 B56399 - BASIC WINDSPEEDS Vb.
- SITE MEAN WINDSPEEDS (Vs) FOR AREAS A, B & C ARE:-
A= 24.2m/s(100m ASL) B=26.4m/s(100m ASL) C=28.8m/s(150m ASL)
- ACTUAL WIND VELOCITY FOR THESE WINDSPEEDS (V_a) ARE:-
A=41.8m/s(93mph) B=45.6m/s(102mph) C=50m/s(111mph)
- FOR AREA 'D' - PLEASE CONTACT ALTRON FOR FOUNDATION SPECIFICATION