

# → Special Bracket Design

## Case Study

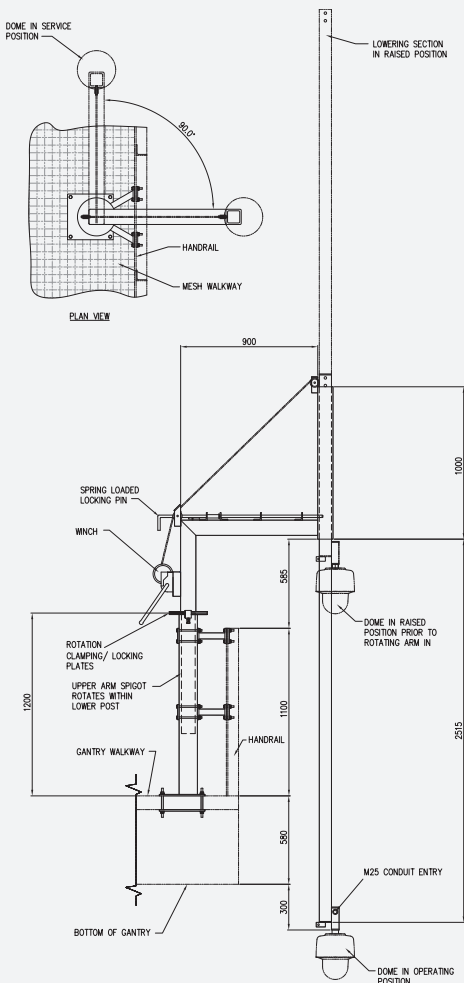
### Gantry mounted telescopic, retractable, swivelling, dome mounting bracket

#### Scenario

Customer requirement was to have a dome mounted below a railway gantry to view along marshalling tracks and then to be able to bring the dome up onto the gantry walkway for servicing. The operation needed to take place within the gantry handrail with no overreaching.

#### Solution

The solution is a pole section that is lowered using a winch through an extended arm which swivels to enable the dome to be brought into the gantry walkway. The swivel arm is locked in the outward 'operating' position and can be padlocked there. The lowering pole is not held on the winch rope when lowered, but by a locking pin, that is spring loaded and operated from within the gantry. The bracket is fixed to the gantry floor and handrails for stability.



## Parapet Mounted Counter-Balance Bracket

Mounts to top of parapet only and tilts by hand onto roof



## Wall Mounted Pole

No stand-off to customer specification



## Cantilever Arm Tower

Cameras oriented downwards to observe vehicles



## Ornate Pole Top Bracket

To customer specification in keeping with other street furniture

