



ACC2FBLA

Fixed height range 4.5m - 10m
Tilt-down height range 4.5m - 15m

Altron Camera Columns, a cost effective and comprehensive range with most models available 'ex stock', offering a good level of security. Suitable for installations where the public has access - tilt-down models have internal padlock facility. The range is generally for light to medium fixed and PTZ applications, but there are also heavy duty (HD) options for high loading PTZ and dual lighting & CCTV applications.

Typically used for the following types of installation

- o Industrial and commercial premises
- o Perimeter detection
- o Utilities sites
- o Schools and universities
- o Railway platforms & car parks
- o Car parks
- o Petrochemical sites
- o Sports stadia

Security Features

- o Internal cabling
- o Internal padlock facility on tilt-down models to protect against unauthorised lowering
- o Close fitting flush doors
- o Solid secure heavy duty door locks

General Features

- o Modular construction for ease of assembly and installation on site
- o Ideal for restricted access areas
- o Provides stable mounting platform for all camera types
- o Demountable winches ensure tilt down models are secure and reduces costs on multiple installations
- o Tilt Down models enable camera maintenance at ground level, therefore reducing maintenance costs
- o Tilt Down models available in both bolt down and post mounted base versions
- o A wide range of standard Altron Accessories and Brackets available ex stock
- o Quick turnaround for larger projects
- o Constructed in high tensile steel and hot dip galvanised after fabrication for durability
- o Option of painting over the galvanised finish in colours available from BS and RAL colour charts
- o For design, manufacturing and finishing standards, see details on page 107



Tilt-down columns have the facility to be padlocked internally



All columns have flush fitting doors

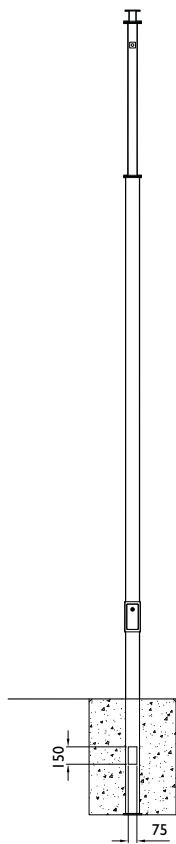


ACC2BPLA in tilted position

ACC Modular Columns ← Technical Specifications

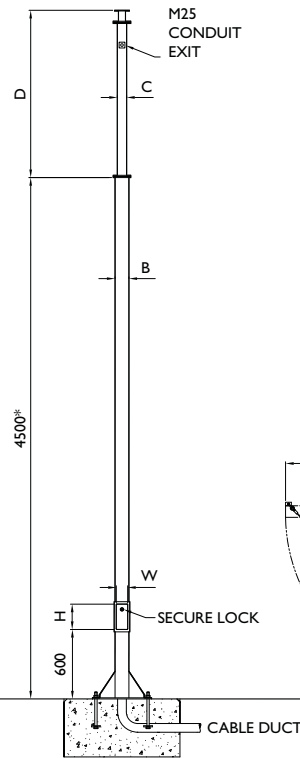
ACC

EB Embedded Base



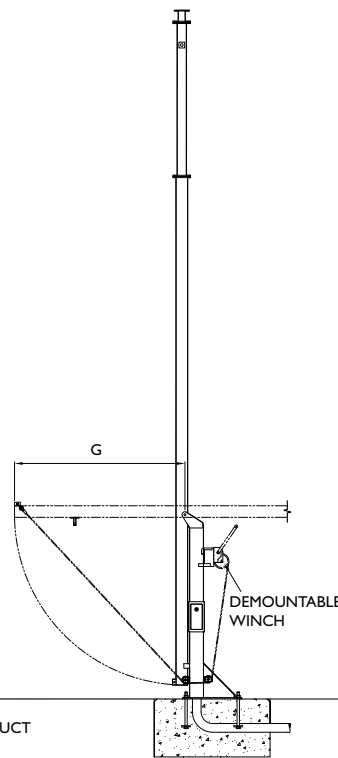
* On models ACC4HD, ACC12 & ACC15 this dimension = 4900

FB Fixed Base



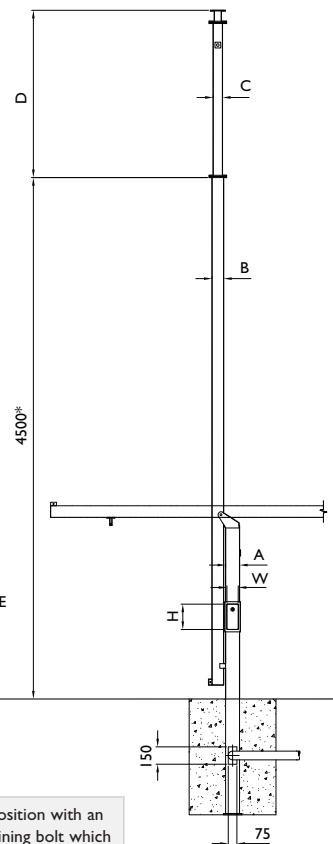
All camera mounting plates are Ø 127 with 8 No Ø 8.5 equi-spaced on 101.6 PCD. Ø 40 thro' column spacer

BP Base Post



Tilt down columns are fixed in the vertical position with an M20/M24 nut screwed onto the column retaining bolt which enters into the secure access hatch through the front of the post. This is then padlockable to stop unauthorised tilting.

PM Post Mounted



FOR FOUNDATION AND BOLTING DETAILS REFER TO PAGE 21

Model No.	Height in mtrs	Post type	Max equip weight at top kgs	Max equip surface area m²	Post size A²	Lower section B²	Mid section B²	Upper section C²	Extension length D mtrs	Door aperture size HxW	Column Rear clearance when tilting G	Winch part number	Product weight kgs
ACC1 Standard duty	4.5	FB/EBLA	35	0.3	—	100	—	—	—	250x70	—	—	68
		PMLA	35	0.3	120	100	—	—	—	270x80	1700	DW1000/AC	100
		BPLA	35	0.3	120	100	—	—	—	270x80	1700	DW1000/AC	115
ACC2 Standard duty	6	FB/EBLA	25	0.2	—	120	—	90	1.5	270x80	—	—	114
		PMLA	25	0.2	120	100	—	80	1.5	270x80	1700	DW1000/AC	115
		BPLA	25	0.2	120	100	—	80	1.5	270x80	1700	DW1000/AC	130
ACC2HD Heavy duty	6	FB/EBLA	35	0.3	—	150	—	100	1.5	280x110	—	—	144
		PMLA	35	0.3	120	120	—	90	1.5	270x80	1700	DW1000/AC	138
		BPLA	35	0.3	120	120	—	90	1.5	270x80	1700	DW1000/AC	157
ACC3 Standard duty	7.5	FB/EBLA	25	0.2	—	150	—	100	3	280x110	—	—	161
		PMLA	25	0.2	150	120	—	90	3	280x110	2000	DW1500/AC	189
		BPLA	25	0.2	150	120	—	90	3	280x110	2000	DW1500/AC	193
ACC3HD Heavy duty	7.5	FB/EBLA	50	0.3	—	200	—	120	3	315x150	—	—	178
		PMLA	50	0.3	150	150	—	100	3	280x110	2000	DW1500/ACHD	218
		BPLA	50	0.3	150	150	—	100	3	280x110	2000	DW1500/ACHD	222
ACC4 Standard duty	9	FB/EBLA	25	0.16	—	150	—	100	4.4	280x110	—	—	197
		PMLA	25	0.16	150	150	—	100	4.4	280x110	2000	DW2500/AC	244
		BPLA	25	0.16	150	150	—	100	4.4	280x110	2000	DW2500/AC	248
ACC4HD Heavy duty	10	FB/EBLA	50	0.5	—	200	—	150	4.9	315x150	—	—	305
		PMLA	50	0.5	200	200	—	150	4.9	315x150	2600	DW2500/ACHD	492
		BPLA	50	0.5	200	200	—	150	4.9	315x150	2600	DW2500/ACHD	500
ACC12	12	PMLA	35	0.3	200	200	150	100	i 4.9 ii 4.9	315x150	2600	DW2500/ACHD	518
		BPLA	35	0.3	200	200	150	100	4.9	315x150	2600	DW2500/ACHD	526
ACC15	15	PMLA	25	0.16	200	200	150	100	4.9	315x150	2600	DW2500/ACHD	555
		BPLA	25	0.16	200	200	150	100	4.9	315x150	2600	DW2500/ACHD	563

Where payloads are greater than those stated above, please contact Altron
EB Version is directly embedded
All dimensions in mm unless stated otherwise

Accessories

Top mounting brackets for Fixed and PTZ cameras	P76
Swanneck brackets for Dome cameras	P81
Anti-climb guards	P77
Clamp-on camera mounting brackets	P78
Telemetry box mounting brackets	P77
Column top mounting cages	P83

Quick reference

Single fixed camera knuckle	PTS-I
Twin fixed camera bracket	TB2-600F
Half swanneck for dome	AW1699H
Full swanneck for dome	AW1699F
Anti climb guard	SGC
Accessory bracket	ATBC