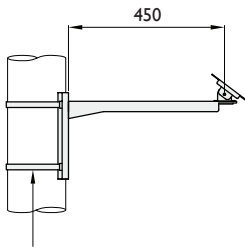


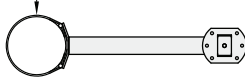
→ Pole & Tower Accessories

Adjustable Pole Mounting Brackets

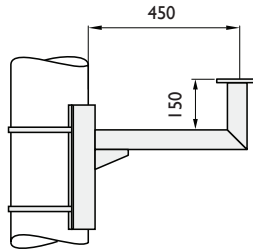
APB-SF



Heavy 16mm stainless steel strapping grade 304



APB-SPT



Load capacities PMB/APB

	PTS-I	HAS-I
For Fixed	10 Kgs	20 Kgs
For PTZ	25 Kgs	

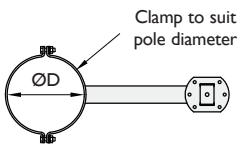
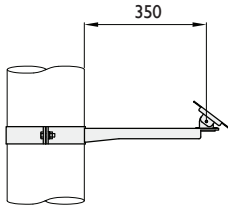
Part No.	Housing Type	Pole Diameter
● APB 150 SF	Single fixed	75-150
● APB 150 TF	Twin fixed	75-150
● APB 150 SPT	Single PTZ	75-150
● APB 150 TPT	Twin PTZ	75-150
● APB 250 SF	Single fixed	150-250
● APB 250 TF	Twin fixed	150-250
● APB 250 SPT	Single PTZ	150-250
● APB 250 TPT	Twin PTZ	150-250

● Stock items

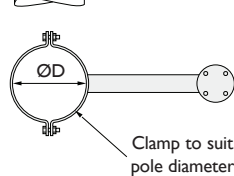
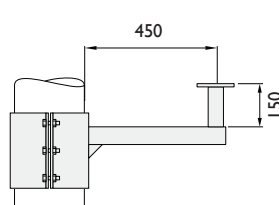
- Stainless steel strapping has a 1 tonne breaking strain
- Can also be produced for AWI699/H & AWI699/F swan necks

Pole Mounting Camera Brackets

PMB-SF



PMB-SPT



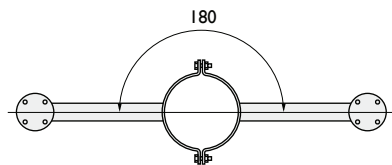
Part No.	Housing Type	Pole Diameter
● PMB (Ø*) SF	Single fixed	To be specified
● PMB (Ø*) TF	Twin fixed	To be specified
● PMB (Ø*) SPT	Single PTZ	To be specified
● PMB (Ø*) TPT	Twin PTZ	To be specified

* Followed by pole diameter

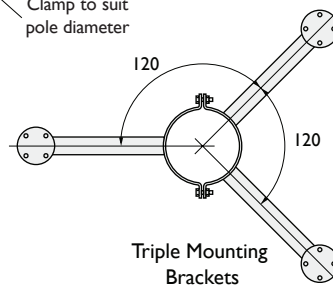
Other configurations and end fittings available on request

● Stock items for diameters 139, 168 & 219

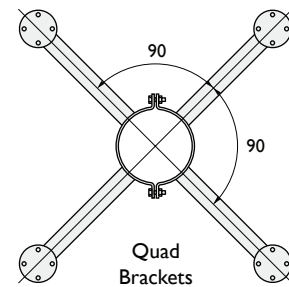
- We can produce pole mounting brackets to suit any camera type or application



Twin Mounting Brackets



Triple Mounting Brackets

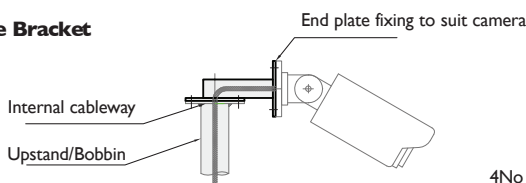


Quad Brackets

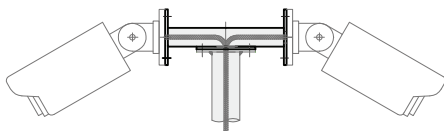
Bullet Camera Brackets

BCB-T

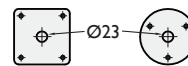
Single Bracket



Twin Bracket



Examples of camera mount plates

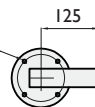


Mounting Options

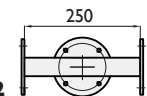
Note: Clamp-on versions also available

4No Ø8.5 on a 101.6 PCD

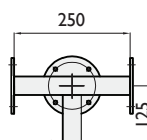
BCB-T1 Single



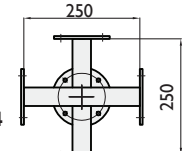
BCB-T2 Twin



BCB-T3 3 Way



BCB-T4 4 Way



All brackets for camera mounting have a Ø127 mounting plate with Ø8.5 holes equi - spaced on 101.6 PCD