

→ Lowering Trolley Head Poles



AWI502/10LTH/DDA

Height ranges AWI545/LTH & AWI502/LTH 4m - 15m
Height range AWI502/LTH/168 Slim-line 4-10m

Altron Lowering Trolley Head Poles enable CCTV equipment to be serviced at ground level, safely, without the need for a man lift or a clear area to tilt the pole over. This is particularly useful in locations where road closures would otherwise be required, pavement locations and pedestrianised areas or where it is not possible to get a man lift and there is no space to tilt the pole over. The AWI545 cabinet based version offers a fully integrated solution, where equipment is mounted in the base of the pole, so no separate street cabinet is required.

Typically used for the following types of installation

- o Where access to the camera location is restricted
- o Public area urban CCTV
- o Highways
- o Prisons and detention facilities
- o Railway platforms & car parks
- o Car parks
- o Retail Parks
- o Sports stadia

Security Features

- o Internal cabling
- o Close fitting flush doors
- o Solid secure heavy duty door locks and high security lock
- o Secure venting method
- o Internal padlock facility available to stop unauthorised access to winch mechanism
- o Anchor bolts below ground level

General Features

- o Stable structures for all camera types
- o Design complies with Highways Agency specification.
- o Trolley Head locks solidly in the raised position by means of a cam lever uplatch, meaning that there is no movement in the Trolley Head when the camera is in operation.
- o AWI545/LTH cabinet based version also available with 500 square cabinet for additional equipment mounting capacity.
- o Flush doors and secure locks as standard, enhance security and appearance.
- o Standard convection venting on AWI545/LTH version eliminates condensation (when the pole base is properly sealed on installation)
- o Unique slim-line version up to 10 metres in height, using a 168 diameter shaft, giving an extremely slim outline silhouette.
- o A wide range of standard Altron Accessories available
- o Constructed in high tensile steel and hot dip galvanised after fabrication for durability
- o Option of painting over the galvanised finish in colours available from BS and RAL colour charts
- o For design, manufacturing and finishing standards, see details on page 107

Pole Options Explained

Our lowering trolley head pole range is made up of the basic units, part numbers AWI502/LTH and AWI545/LTH. We offer a full range of upgrades as additions to the basic poles, as outlined below. All additional options are explained further in the following pages.

Basic pole (AWI502/LTH)

Lamp standard version with no back board within the winch compartment. Winch is auto-braking and manually operated and the trolley head neck is fixed. Quick release uplatch included as standard. Trackway is extra.

Basic pole with cabinet base (AWI545/LTH)

As the AWI502/LTH, but with a cabinet base. There are twin doors as standard, front and back with equipment mounting boards within both compartments. Trackway is extra.

Addition /DO, Drill Operated dual drum winch

This winch requires the Drill winding unit DW/DO to operate it. This enables the trolley head to be lowered using the DW/DO, rather than the manually operated the winch. Winch has dual drum, so two cables are employed, with the second cable as a failsafe. Trackway is fitted as standard with this option.

Addition of /TR - Trackway.

The benefit of Trackway, is to keep the trolley head aligned when lowering and raising, in high wind conditions (an extra item on the basic pole models).

Addition of the /DDA Drop Down Arm.

Our patented Drop Down Arm, enables camera equipment to be brought down to waist height, for maintenance, without having to support the weight of the camera equipment by hand.

Addition of the /RA, Rotating Arm and /SN-RA Swan Neck Rotating Arm option

This is ideally suited for dome mounting using our swan neck, or for light PTZ applications. This is a cost effective way of getting camera equipment down to ground level for maintenance. We do not recommend this option for heavier PTZ applications, of loads over 10 kgs.

Addition of /CM, Cable Management

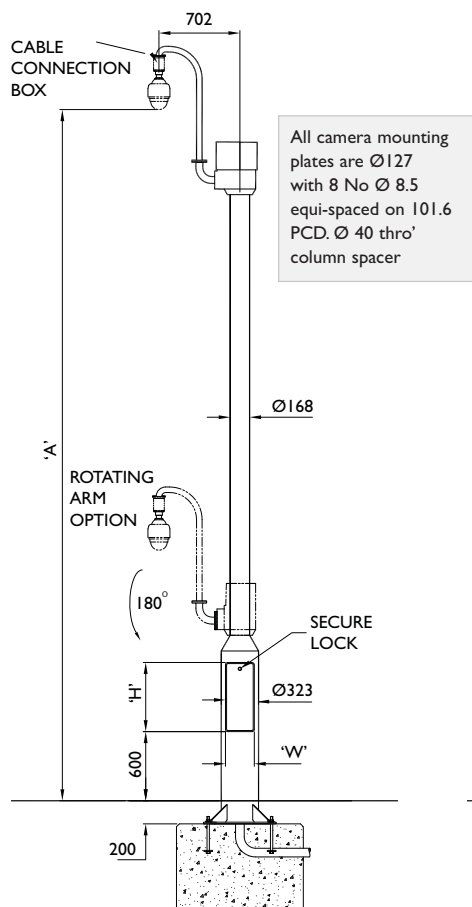
Cable management enables camera cables to be disconnected and marshalled through the pole automatically.

Cable pulley configurations

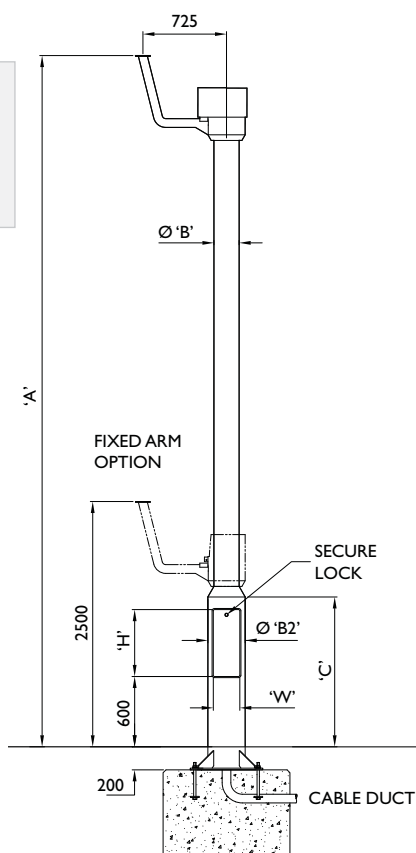
A number of pulley configurations are available for the head of the pole, depending on the type of cable being used to feed the camera. Please contact our Sales team who will provide further information and advice.

Lowering Trolley Head Poles ← Technical Specifications

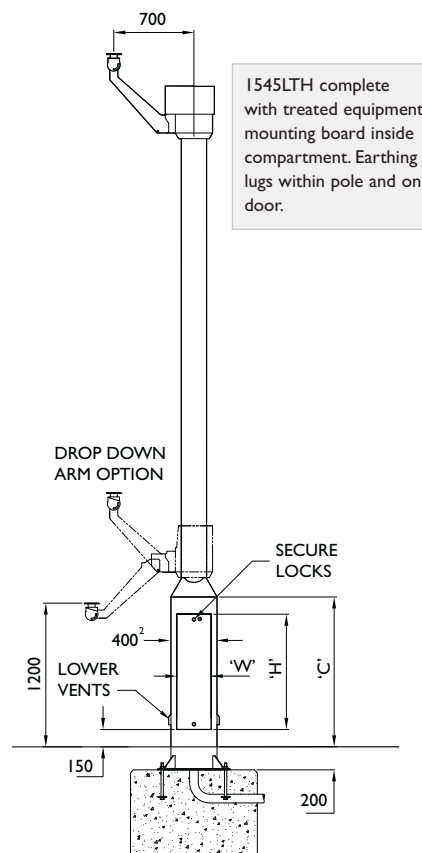
AW1502/LTH/168/SN Slimline Lamp Standard



1502 LTH Lamp Standard



1545 LTH Cabinet Based



FOR FOUNDATION AND BOLTING DETAILS REFER TO PAGE 58

Model No.	Height in mtrs	Max equip weight at top kgs	Max equip surface area m ²	Pole ØB	Cabinet height above ground C	Front door size H x W	Rear door size H x W	Product weight kgs
AW1545/4LTH	4	30	0.25	219	1300	970x270	520x270	281
AW1545/5LTH	5	30	0.25	219	1300	970x270	520x270	310
AW1545/6LTH	6	30	0.25	219	1300	970x270	520x270	339
AW1545/7LTH	7	30	0.25	219	1300	970x270	520x270	368
AW1545/8LTH	8	30	0.25	219	1300	970x270	520x270	397
AW1545/9LTH	9	30	0.25	219	1300	970x270	520x270	513
AW1545/10LTH	10	30	0.25	219	1300	970x270	520x270	548
AW1545/10HDLTH	10	30	0.25	273	1300	970x270	520x270	738
AW1545/12LTH	12	30	0.25	273	1300	970x270	520x270	731
AW1545/15LTH	15	30	0.25	273	1300	970x270	520x270	910

Model No.	Height in mtrs	Max equip weight at top kgs	Max equip surface area m ²	Shaft ØB	Base ØB2	Base height C	Door aperture size H x W	Product weight kgs
AW1502/4LTH	4	30	0.25	219	323	1300	425x177	277
AW1502/5LTH	5	30	0.25	219	323	1300	425x177	306
AW1502/6LTH	6	30	0.25	219	323	1300	425x177	335
AW1502/7LTH	7	30	0.25	219	323	1300	425x177	364
AW1502/8LTH	8	30	0.25	219	323	1300	425x177	393
AW1502/9LTH	9	30	0.25	219	323	1300	425x177	495
AW1502/10LTH	10	30	0.25	219	323	1300	425x177	530
AW1502/10HDLTH	10	30	0.25	273	355	1300	425x177	693
AW1502/12LTH	12	30	0.25	273	355	1300	425x177	686
AW1502/15LTH	15	30	0.25	273	355	1300	425x177	815

AW1545/LTH & AW1502/LTH Options

Decorative Banding (on Cabinet only)	/B
Altron 4 Point Locking	/A4P
Trackway Upgrade (for manually operated poles)	/TR
Dual drum Winch & Drill Winding Device Upgrade (Includes trackway)	/DO
Drill Winding Device	DW/DO
Drop Down Arm for 15kg camera	/DDA/15
Drop Down Arm for 30kg camera	/DDA/30
Cable Management System	/CM
Rotating Arm	/RA
Swan Neck Rotating Arm	/SN-RA

AW1502/LTH only Options

High Security Lock	/HS
--------------------	-----

AW1545/LTH Cabinet & Door Configurations

Standard cabinet base size is 400² Standard door configuration is one full size door on winch access side & one half size door on opposite side.

450sq cabinet	/450
500sq cabinet	/500

Accessories

AW1545/LTH & AW1502/LTH

Manual Winch Winder for Dual Drum Winch	/MWW
Support Bracket for Drill Winding Device	/DSB
Internal Padlock Plate	/IPP

Where payloads are greater than those stated above, please contact Altron
All dimensions in mm unless stated otherwise