

→ Tilt-Down Wall Mounted Poles

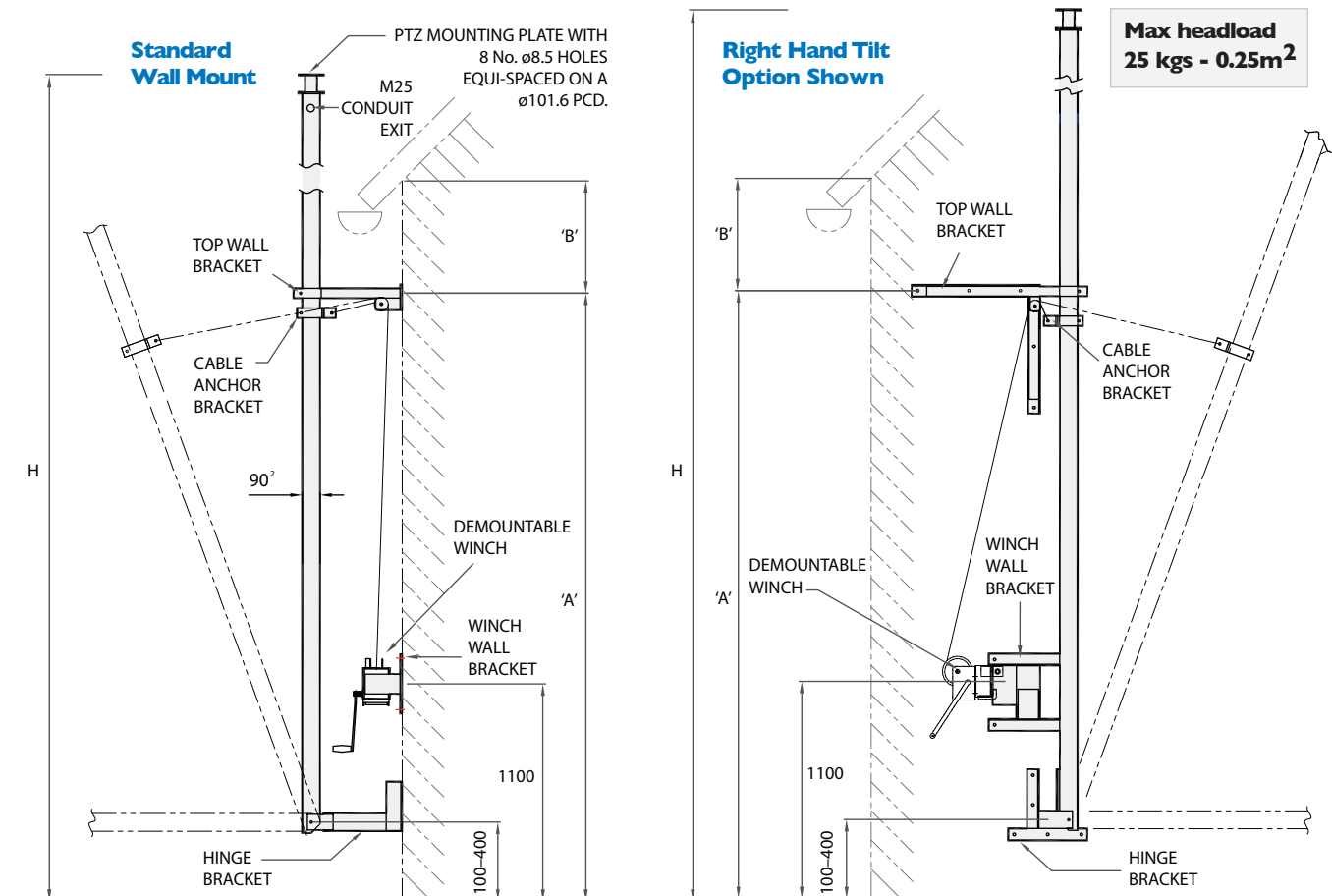
Features of Wall Mounted Tilt-Down Poles

Altron Tilt-down wall mounted poles offer a solution to virtually any location and head load where a tilt-down wall mounted pole is suitable, for gaining an elevated viewpoint from an existing structure. Bespoke mounting brackets can be provided to suit site specific requirements.

- o Comprehensive standard range to suit most applications
- o All Altron standard accessories available
- o Hot dip galvanised for longevity
- o Bespoke fixing brackets for non-standard situations

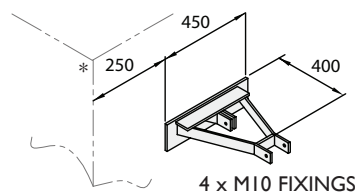
AW1934 Wall Mounted Tilt-Down Poles

For single or two storey walls, giving a cost effective solution. Demountable winches are used for added security.

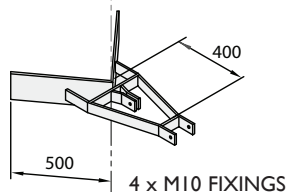


Mounting Bracket Options

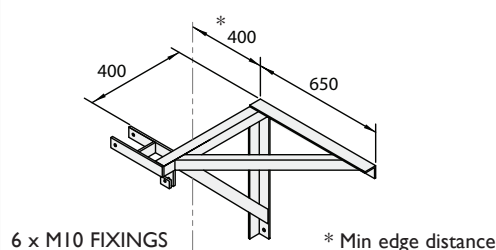
Wall Mount



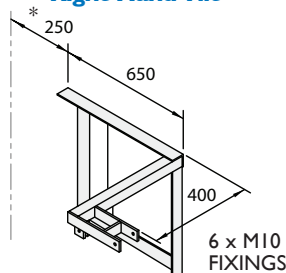
Corner Mount



Left Hand Tilt



Right Hand Tilt



Pole Height	Part No.	Dim H	Dim A min	Dim A max	B Min	Winch Part No.
3	AW1934/3	3.0-3.3	1.8	2.7	0.3	DW1934/3
4	AW1934/4	4.0-4.3	2.3	3.2	0.3	DW1934/4
5	AW1934/5	5.0-5.3	2.9	4.2	0.4	DW1934/5
6	AW1934/6	6.0-6.3	3.4	5.2	0.4	DW1934/6
7	AW1934/7	7.0-7.3	3.8	6.2	0.5	DW1934/7
8	AW1934/8	8.0-8.3	4.3	7.1	0.5	DW1934/8

• Stock items

All dimensions are in metres.

- o For left hand tilt & right hand tilt suffix part number /LHT or /RHT e.g AW1934/4/LHT
- o For corner mount suffix part number /C
- o Dimension 'A' to be maintained for camera stability and to limit winch loading
- o Dimension 'B' to be maintained for upper bracket fixing strength
- o Fixings not supplied

Note ref wall construction. We have designed the loading and bolt fixing for our wall mounted poles for fixing into good brickwork with no less than the minimum spacing on wall brackets, as noted in the table above. For breeze block type walls and brick walls in poor condition, we recommend bolting through the wall and employing a structural engineer, to ensure that the wall is suitable.