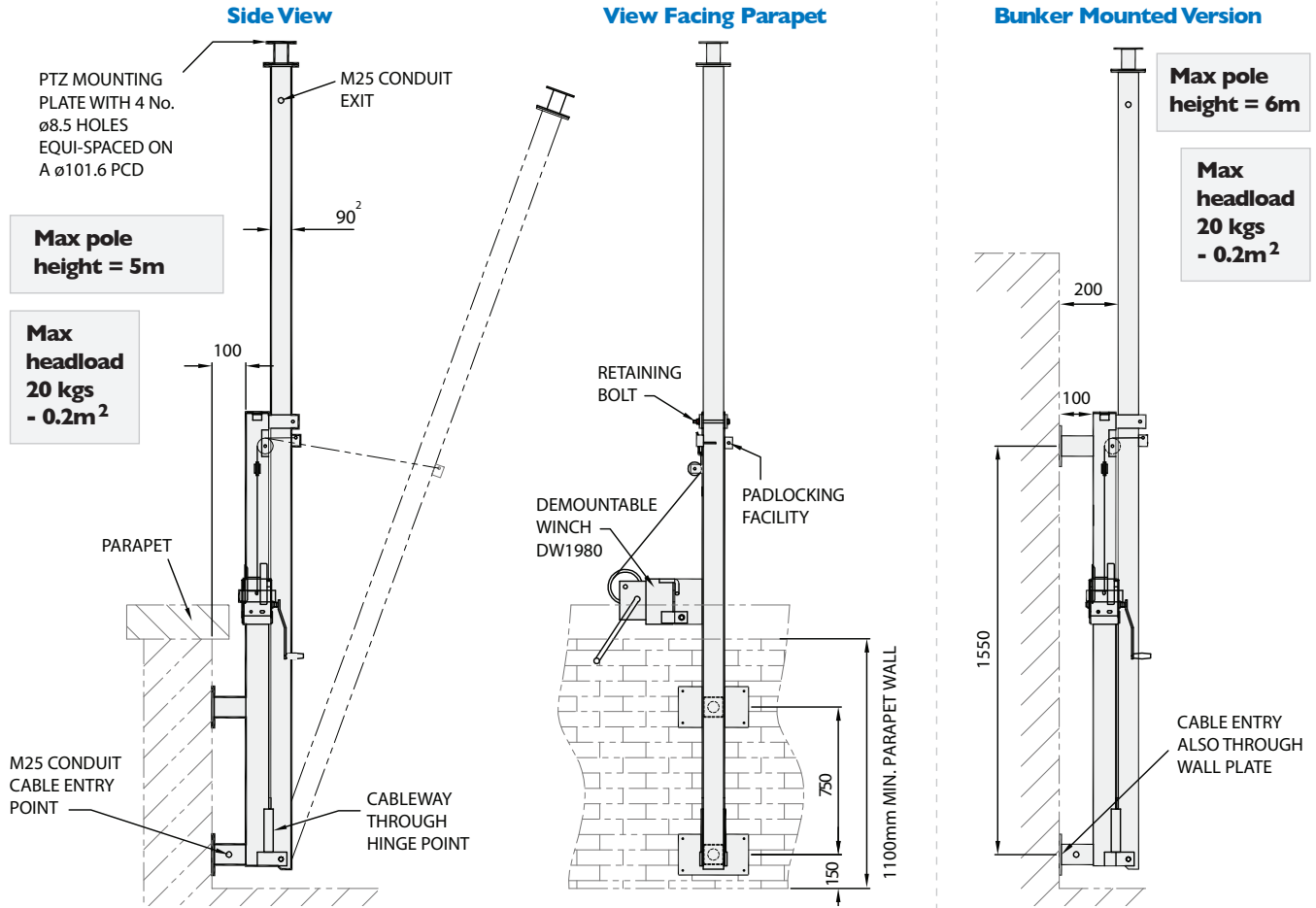


AW1980 Parapet Mounted Tilt-Down Poles

AW1980 parapet mounted tilt-down poles give additional height from a standard parapet of suitable construction. Demountable winches and the facility to padlock make this product suitable for public areas such as multi-storey car park roof levels. A roof 'bunker' mounted version is also available.

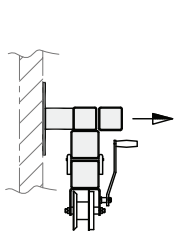


- Parapets must be of solid construction, ideally pre-cast concrete or steel-framed
- For brick built parapets, single skin construction is not suitable
- Parapets where the brickwork is not in good condition are not suitable
- The minimum parapet height is 1100mm
- The product head load must not be exceeded
- In cases where a greater head load is proposed, Altron must be contacted and suitable advice should be sought regarding parapet construction and strength

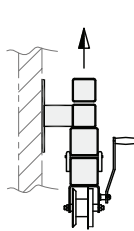
Note ref wall construction. We have designed the loading and bolt fixing for our wall mounted poles for fixing into good brickwork. For breeze block type walls and brick walls in poor condition, we recommend bolting through the wall and employing a structural engineer, to ensure that the wall is suitable

Mounting Bracket Options

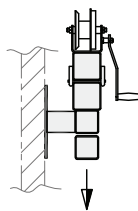
Standard Tilt



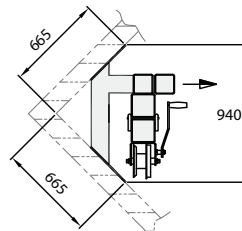
Right Hand Tilt



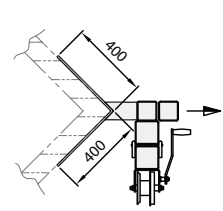
Left Hand Tilt



Internal Corner Mount



External Corner Mount



Wall Plate Details

