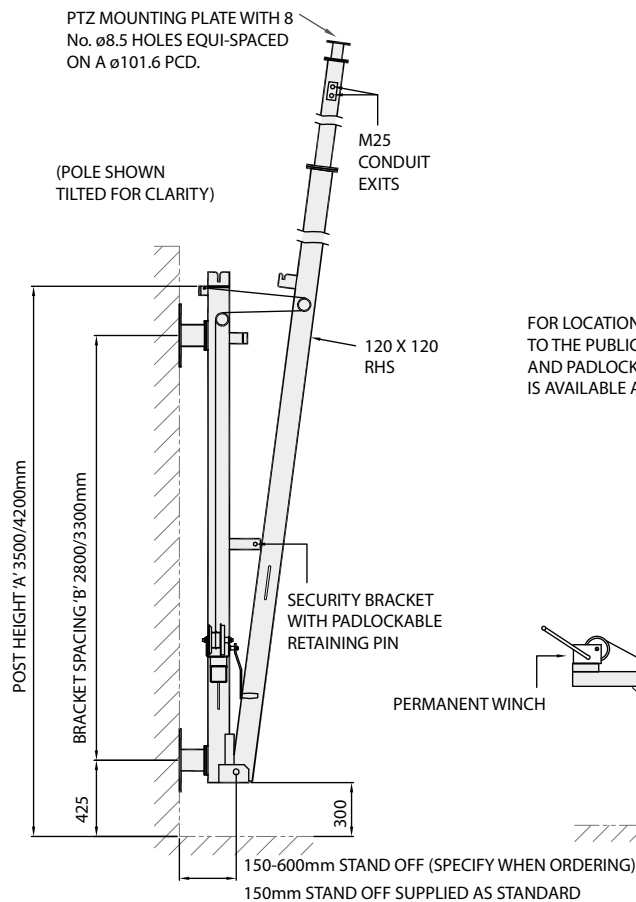


# → Tilt-Down Wall Mounted Poles

## AW4772 High Loading Wall-Mounted Tilt-Down Pole

Typically for dual camera and lighting installations, this range can be operated safely without the need to access a high level locking bolt, utilising a high level latch operated from ground level. Winches are fixed and can be supplied with padlockable cover and cable guard.

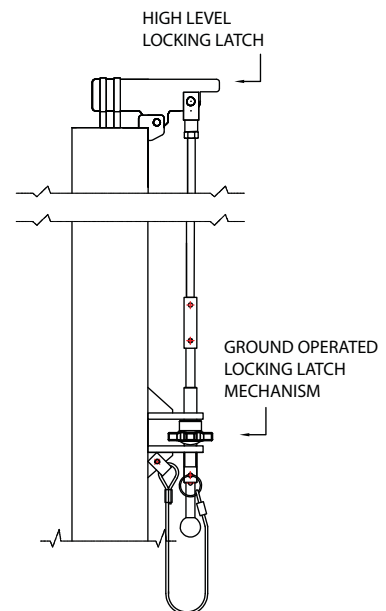


## Guidance for Equipment Loading

Total Height (m)	Part No.	Wind surface area of equipment	Weight of equipment (kgs)	Post height 'A'	Bracket spacing 'B'
4	<b>AW4772/4</b>	0.75 m <sup>2</sup>	75	3500 mm	2800 mm
5	<b>AW4772/5</b>	0.75 m <sup>2</sup>	75	3500 mm	2800 mm
6	<b>AW4772/6</b>	0.65 m <sup>2</sup>	70	4200 mm	3300 mm
7	<b>AW4772/7</b>	0.5 m <sup>2</sup>	55	4200 mm	3300 mm
8	<b>AW4772/8</b>	0.4 m <sup>2</sup>	40	4200 mm	3300 mm

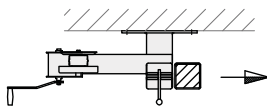
- For left hand tilt & right hand tilt suffix part number /LHT or /RHT e.g AW4772/5/LHT
- For corner mount suffix part number /C
- Bracket spacing can be altered to suit site conditions depending on suitability of structure
- Optional winch cable guard
- Optional padlockable winch housing

### Uplatch Detail

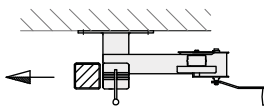


## Mounting Bracket Options

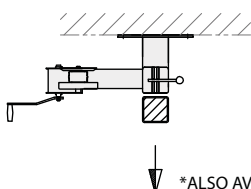
### Right Hand Tilt



### Left Hand Tilt

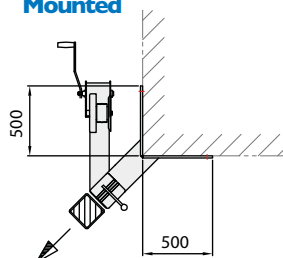


### Standard Wall Mounted



\*ALSO AVAILABLE WITH RIGHT HAND WINCH MOUNTING

### Standard Corner Mounted



## Wall Plate Details

