

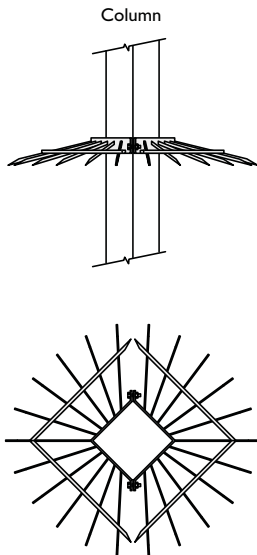
→ Pole & Tower Accessories

Anti Climb Guards

● Stock items

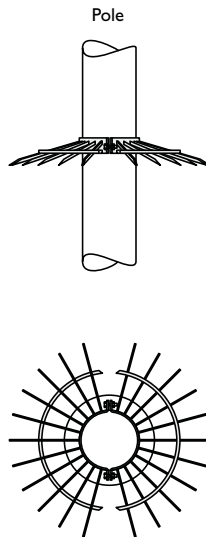
● SGC/SGP

Followed by column or wall mounted pole type
e.g. for ACC1FB = SGC1 / For ACP2 = SGP2



● SGP (Ø*)

Followed by * pole diameter
e.g. for Ø139 pole = SGP/139

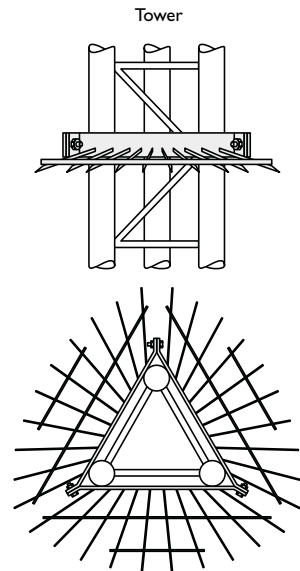


Available
for pole
diameters

Ø76
Ø89
Ø114
Ø139
Ø168
Ø193
Ø219
Ø273

● SGT

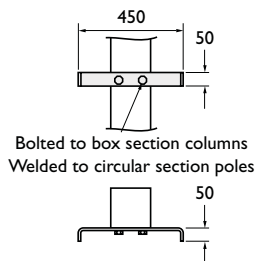
Followed by tower type
e.g. for ACT2BP = SGT/2



Ladder Stays

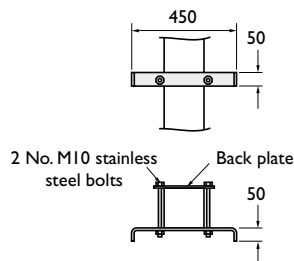
● LSI

Purchased with pole or column



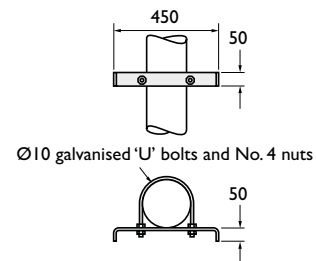
● LSI/C

Retro fit for box section columns
Followed by column type or size
e.g. LSI/C/ACC1FB



● LSI/P

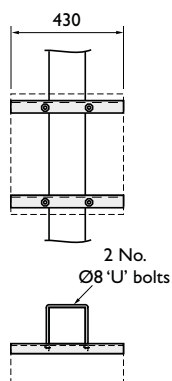
Retro fit for tubular pole
Followed by pole diameter
e.g. LSI/P139



Adjustable Telemetry Receiver Brackets

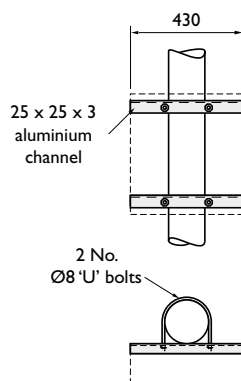
● ATBC/ATBP

Followed by column type or size. ATBC for column. ATBP for wall mounted pole
e.g. ATBC/1



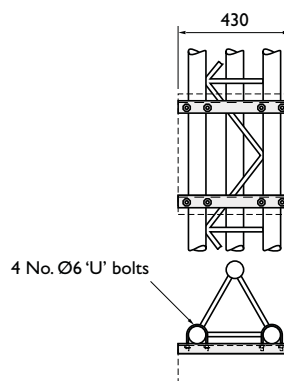
● ATBC

Followed by pole diameter
e.g. ATBC/139



● ATBT

Followed by tower type
e.g. ATBT/2



Fitting adjustable telemetry receiver bracket

1. Drill aluminium channels to fit hole centre on receiver box (one channel across the bottom, one across the top)
2. Bolt channels to the box
3. Trim channels to the width of the box using hacksaw
4. Bolt the box to the column/pole/tower using the 'U' bolts supplied