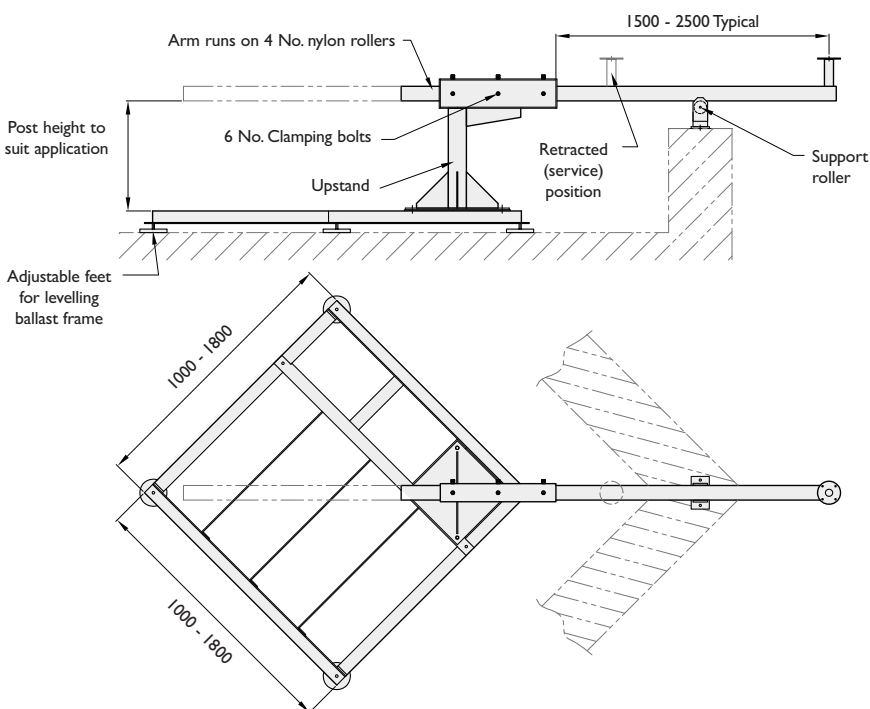


# → Roof Mounted Brackets

## Sliding Arm Brackets

### SAI-RM

Roof mounted sliding arm bracket



Arm Length	Pt No.
1.5m	<b>SAI-1500RM</b>
2m	<b>SAI-2000RM</b>
2.5m	<b>SAI-2500RM</b>

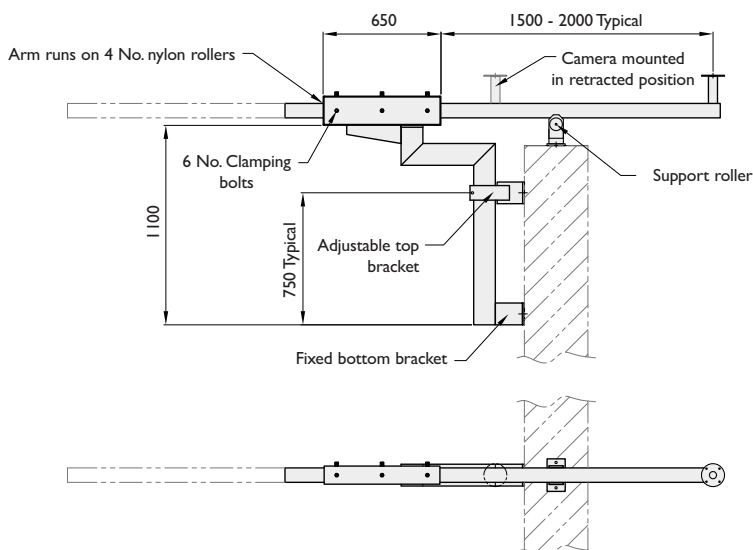
### Upstand Heights Available

300 mm (supplied as standard)  
600mm & 1100mm  
Other sizes made to order

- o Max. load capacity 25kgs / 0.25m<sup>2</sup>
- o Available as flat mount as shown or corner mount
- o Also available with bolt together frame (suffix /BD) for access onto restricted roof areas. (/BD standard on 1500 + 1800 frames, refer to website for full part no. list)
- o Typical ballast amount 200 - 250kgs depending on arm length post height and location

### SAI-PM

Parapet mounted sliding arm bracket



Arm Length	Pt No.
<b>Flat Parapet Mount</b>	
1m	<b>SAI-1000PM</b>
1.5m	<b>SAI-1500PM</b>
2m	<b>SAI-2000PM</b>
<b>Corner Parapet Mount</b>	
1m	<b>SAI-1000PMC</b>
1.5m	<b>SAI-1500PMC</b>
2m	<b>SAI-2000PMC</b>

- o Available as flat mount as shown or corner mount
- o Max. load capacity 25kgs / 0.25m<sup>2</sup>

All brackets for camera mounting have a Ø127 mounting plate with 8 no Ø8.5 equi - spaced on 101.6 PCD